

Register your product online

網上登記新產品保養

For Singapore Warranty, please scan QR code or visit below website:



<https://www.whirlpool.com.sg/>

For Hong Kong Warranty 香港地區保養

Save the planet and register your product warranty online!
Enjoy extra 1-month free warranty upon online registration.

「惠」環保出力，減少用紙！於網上登記產品更可獲額外多一個月保養。



<https://qrco.de/WHKwarranty>

Whirlpool® Registered trademark/TM Trademark of Whirlpool group of companies

All rights reserved

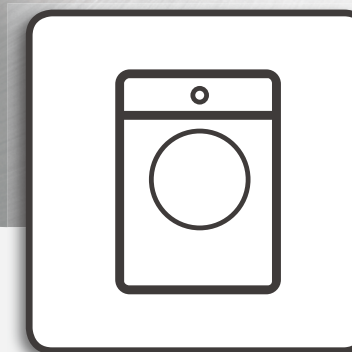
註冊商標/惠而浦集團的TM商標

版權所有 翻印必究



Whirlpool

Whirlpool



Health & Safety, Use & Care, Installation Guide and Online Warranty Registration Information

產品安全指引、使用說明、安裝指南及
網上登記保養資料

Model 產品型號：

WFRB802AHW

WFRB804AHW

WFRB904AHW



www.whirlpool.com.sg
www.whirlpool.com.hk

CONTENTS



THANK YOU FOR BUYING A WHIRLPOOL PRODUCT.



Read operator's manual

INSTRUCTION BEFORE WASHING

SAFETY NOTICE	2~3
INSTALLATION INSTRUCTIONS	4~7
SPECIFICATION SHEET	7
NAME OF PARTS	8
ACCESSORIES	8

OPERATION INSTRUCTION

LOCK AND UNLOCK METHOD	9
DOOR	9
INTRODUCTION TO DETERGENT DISPENSER	10
INTRODUCTION TO CONTROL PANEL	11~12
PROGRAMME CHART	13~14
FIRST-TIME AND DAILY USES	15
VARIOUS FUNCTIONS	16
HINTS AND TIPS	17
INDICATORS	17

CLEANING AND MAINTENANCE

CLEANING AND MAINTENANCE	18~19
NON-FAILURE CONDITION	20
TROUBLESHOOTING GUIDE	21
AFTER-SALES SERVICE	22

SAFETY NOTICE (be sure to observe)

Before using the appliance, read these safety instructions. Keep them nearby for future reference. These instructions and the appliance itself provide important safety warnings, to be observed at all times. The manufacturer declines any liability for failure to observe these safety instructions, for inappropriate use of the appliance or incorrect setting of controls.

⚠ Very young children (0-3 years) should be kept away from the appliance. Young children (3-8 years) should be kept away from the appliance unless continuously supervised. Children from 8 years old and above and persons with reduced physical, sensory or mental capabilities or lack of experience and knowledge can use this appliance only if they are supervised or have been given instructions on safe use and understand the hazards involved. Children must not play with the appliance. Cleaning and user maintenance must not be carried out by children without supervision. Never open the door forcibly or use it as a step.

PERMITTED USE

⚠ **CAUTION:** The appliance is not intended to be operated by means of an external switching device, such as a timer, or separate remote controlled system.

⚠ This appliance is intended to be used in household and similar applications such as: staff kitchen areas in shops, offices and other working environments; farm houses; by clients in hotels, motels, bed & breakfast and other residential environments.

⚠ Do not load the machine above the maximum capacity (kg of dry cloth) indicated in the programme table.

⚠ Do not use any solvents (e.g. turpentine, benzene), detergents containing solvents, scouring powder, glass or general purpose cleaners, or flammable fluids; do not machine wash fabrics that have been treated with solvents or flammable liquids.

INSTALLATION

⚠ The appliance must be handled and installed by two or more persons - risk of injury. Use protective gloves to unpack and install - risk of cuts.

If you want to stack a dryer on top of your washing machine, first contact our After-Sales Service or your specialist dealer to verify whether this is possible. This is only possible if the dryer is attached to the washing machine by means of appropriate stacking kit available through our After-Sales Service or your specialist dealer.

⚠ Move the appliance without lifting it by the worktop or top lid.

⚠ Installation, including water supply (if any) and electrical connections and repairs must be carried out by a qualified technician.

Do not repair or replace any part of the appliance unless specifically stated in the user manual. Keep children away from the installation site. After unpacking the appliance, make sure that it has not been damaged during transport. In the event of problems, contact the dealer or your nearest After-Sales Service. Once installed, packaging waste (plastic, styrofoam parts etc.) must be stored out of reach of children - risk of suffocation. The appliance must be disconnected from the power supply before any installation operation - risk of electric shock. During installation, make sure the appliance does not damage the power cable - risk of fire or electric shock. Only activate the appliance when the installation has been completed.

⚠ Do not install your appliance where it may be exposed to extreme conditions, such as: poor ventilation, temperatures below 5 °C or above 35 °C.

⚠ When installing the appliance make sure that the four feet are stable and resting on the floor, adjusting them as required, and check that the appliance is perfectly level using a spirit level.

SAFETY NOTICE (be sure to observe)

⚠ If the appliance is being installed on wood or "floating" floors (certain parquet and laminate materials), secure a 60 x 60 x 3 cm (at least) sheet of plywood to the floor then place the appliance on top of this.

⚠ Connect the water inlet hose(s) to the water supply in accordance with the regulations of your local water company.

⚠ For cold fill only models: do not connect to the hot water supply.

⚠ For models with hot fill: the hot water inlet temperature must not exceed 60°C.

⚠ The washing machine is fitted with transport bolts to prevent any possible damage to the interior during transport. Before using the machine, it is imperative that the transport bolts are removed. After their removal, cover the openings with the 4 enclosed plastic caps.

⚠ After installation of the device, wait a few hours before starting it so that it acclimates to the environmental conditions of the room.

⚠ Make sure that the ventilation openings in the base of your washing machine (if available on your model) are not obstructed by a carpet or other material.

⚠ Use only new hoses to connect the appliance to the water supply. The old hose-sets should not be reused.

⚠ The supply water pressure must be in the 0.1-1Mpa range.

ELECTRICAL WARNINGS

⚠ It must be possible to disconnect the appliance from the power supply by unplugging it if plug is accessible, or by a multi-pole switch installed upstream of the socket in accordance with the wiring rules and the appliance must be earthed in conformity with national electrical safety standards.

⚠ Do not use extension leads, multiple sockets or adapters. The electrical components must not be accessible to the user after installation. Do not use the appliance when you are wet or

barefoot. Do not operate this appliance if it has a damaged power cable or plug, if it is not working properly, or if it has been damaged or dropped.

⚠ If the supply cord is damaged, it must be replaced with an identical one by the manufacturer, its service agent or similarly qualified persons in order to avoid a hazard -risk of electric shock.

CLEANING AND MAINTENANCE


⚠ **WARNING:** Ensure that the appliance is switched off and disconnected from the power supply before performing any maintenance operation; never use steam cleaning equipment -risk of electric shock.

DISPOSAL OF PACKAGING MATERIALS

⚠ The packaging material is 100% recyclable and is marked with the recycle symbol ♻. The various parts of the packaging must therefore be disposed of responsibly and in full compliance with local authority regulations governing waste disposal.

DISPOSAL OF HOUSEHOLD APPLIANCES

⚠ This appliance is manufactured with recyclable or reusable materials. Dispose of it in accordance with local waste disposal regulations. For further information on the treatment, recovery and recycling of household electrical appliances, contact your local authority, the collection service for household waste or the store where you purchased the appliance. This appliance is marked in compliance with European Directive 2012/19/EU, Waste Electrical and Electronic Equipment (WEEE). By ensuring this product is disposed of correctly, you will help prevent negative consequences for the environment and human health.

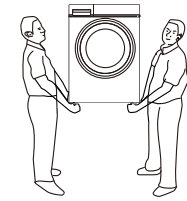
The symbol  on the product or on the accompanying documentation indicates that it should not be treated as domestic waste but must be taken to an appropriate collection center for the recycling of electrical and electronic equipment.

INSTALLATION INSTRUCTIONS

INSTALLATION INSTRUCTIONS

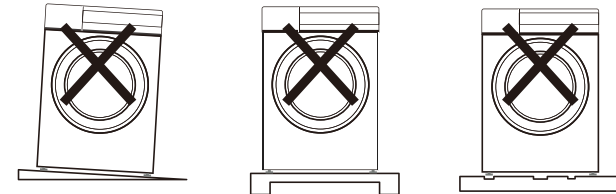
Transport

Transport must be handled by two persons. Two persons should respectively stand on two sides of the washing machine and hold with both hands to transport the washing machine.



Placing the washing machine correctly

The washing machine must be installed on firm, flat and slip-proof ground. Do not place the washing machine on carpeted or wood covered floor. It is forbidden to place the washing machine on a ground platform and rack. The washing machine must keep a minimum distance of 10 cm away from the wall or the hard reflector on three sides.

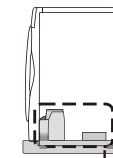
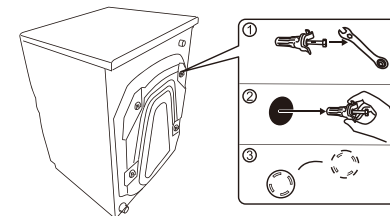


1. On sloping ground 2. On ground platform and rack 3. On uneven ground

Removing transport bolts and base protector

To protect the washing machine during transport, the internal structure of the washing machine is fastened with four transport bolts. All the transport bolts should be removed before use. (If the bolts are not removed, the washing machine will vibrate vigorously, generate loud noises and function improperly during spinning.)

1. Loosen the transport bolts (four pieces) with a wrench.
 2. Shake the bolts left and right to pull them out.
 3. Align the bolt covers with the original bolt holes and press until they fit.
- Please keep the transport bolts safe. They are necessary to make a move.
 - Do remove the base protector before use, as shown in the figure, or the washing machine will function improperly.



Base protection device

INSTALLATION INSTRUCTIONS

Level adjustment

If installed on an uneven place, the washing machine will generate abnormal noises or vibrations or function abnormally when in use.

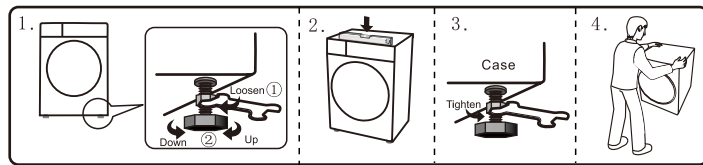
The feet of the washing machine (the four feet are all adjustable) can be adjusted by the following method:

1. Loosen clockwise the locking nuts of the washing machine feet with the wrench and rotate the feet to adjust the height so as to make the washing machine level.
2. When allowed by conditions, use a level meter to check the adjusted state of the washing machine and make calibration when necessary.

Note: all four feet must reliably touch the ground and stand on the ground firmly.

3. Tighten the locking nuts counterclockwise with the wrench to lock the nuts to the bottom of the case.

4. After adjustment, press the diagonal corners of the top cover of the washing machine by a proper force with two hands to confirm that the washing machine is stable.



Choosing water tap

Water tap type: (The opening of the water tap should be flat.)

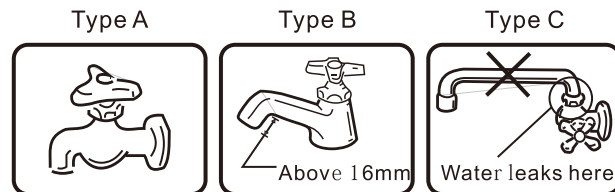
Type A: most suitable type

Type B: the water tap length must be greater than 16 mm, or the universal joint cannot be installed.

Type C: Water may leak from the position as shown in the figure.

CAUTION:

- Do not connect to a hot water source of over 50°C.
- If the water tap used is not suitable, replace with a suitable one.



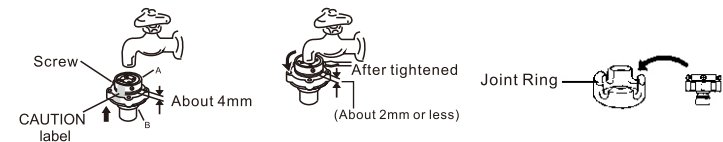
INSTALLATION INSTRUCTIONS

Connecting the inlet hose

Note : It is recommended the use of the provided hose.

How to attach the inlet hose

1. Loosen the four screws and slide the top of the inlet hose joint (section A in the figure) onto the faucet. Then, securely tighten the four screws provided with the inlet hose joint by using a screwdriver to secure the top of the joint to the faucet.
2. Remove the CAUTION label from the inlet hose joint.
3. Turn the male coupler on the joint (section B in the figure) clockwise to attach it securely to the top of the joint (section A in the figure).



CAUTION:

If outer diameter of faucet is larger than caliber of the Joint Ring, loosen the four screws and remove the Joint Ring from the inlet hose joint.

Connecting Water Inlet Hose to the Washer

Turn the nut clockwise till the nut is tight while holding the hose.

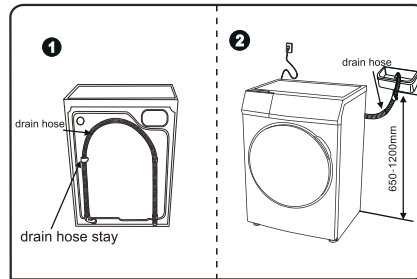
Turn the nut counterclockwise after turning the faucet off if you want to detach the water.



INSTALLATION INSTRUCTIONS

CONNECTION OF DRAIN HOSE

1. When washing machine not in use, put drain hose at back of washing machine.(as pic 1 shows)
 2. When washing machine in use, put drain hose into drainage pond (as pic 2 shows); you can also put end of drain hose into sewer, leaving space between end of drain hose and sewer elbow to avoid difficulty in draining water out of washing machine.
 3. Clean filter in pump periodically to keep washing machine working normally.
- Note:** Do not take off drain hose to avoid drainage problems.



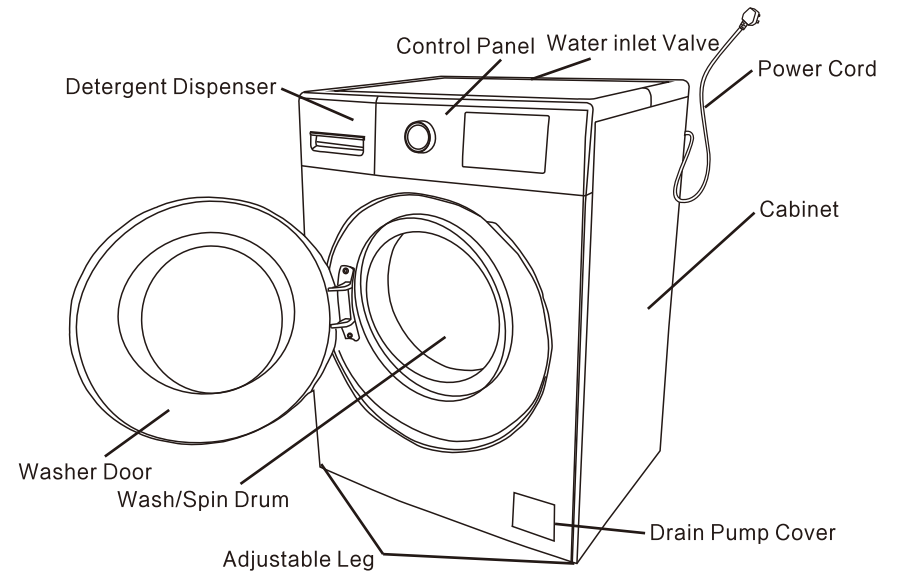
SPECIFICATION SHEET

Model	WFRB802AHW	WFRB804AHW	WFRB904AHW
Rated wash capacity	8.0kg	8.0kg	9.0kg
Rated spin capacity	8.0kg	8.0kg	9.0kg
Max current	10A	10A	10A
Rated voltage	220-240V/50Hz	220-240V/50Hz	220-240V/50Hz
Rated heating power	1700W	1700W	1700W
Rated power	1800W	1800W	1800W
Water pressure	0.03~1.0MPa	0.03~1.0MPa	0.03~1.0MPa
Product dimension	600x580x850	600x580x850	600x580x850
Weight	63kg	63kg	66kg

NAME OF PARTS

ATTENTION

- We suggest the user to run the Drum clean program before the first wash.
- Don't forget to close the water tap and unplug the power plug to avoid any flood and fire disaster.



ACCESSORIES

Instruction manual	Water Supply Hose	Lid (4Piece)	Spanner

LOCK AND UNLOCK METHOD

DOOR LOCK

When the machine is working, the door locks automatically. It can't be opened.

UNLOCK

When the machine is working, press the "Pause Start" button.
The door can be unlocked after inner tub stops spinning.

- If power plug is removed directly or if there is a power cut when the machine is running, the door can't be unlocked automatically.
- If door is opened when the machine is in operation, the foam may spillover. Clean with towel thoroughly.
- The user can't open the door when the machine is running with a high working temperature.
- The user can't open the door when the water temperature is high.

DOOR

To open the door, pull the handle.



To close the door, hold the handle and push so that you can hear it click shut.



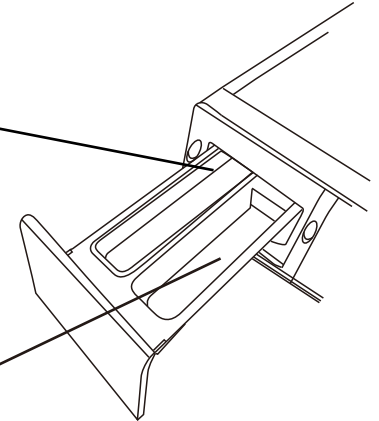
INTRODUCTION TO DETERGENT DISPENSER

WASHING POWDER ● DETERGENT

- This compartment is for filling up with powder or liquid detergent.
- If powder detergent is being used, please mix with a small amount of water to dissolve the detergent before placing into compartment.

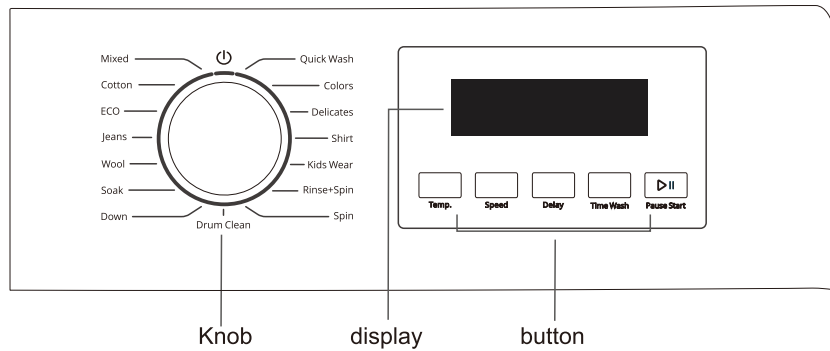
SOFTENER

- Please input the softener before washing. It will be injected automatically before last rinse. If using the concentrated softener, please input it after dilution with water accordingly.



- Please use the specified detergent for front loading washing machine.
- Please don't use superfluous detergent. Otherwise it will cause more foam and influence the rinse performance or cause malfunction.
- Please refer to user guide for proper use of detergent and apply according to the clothes type, color, water temperature and soil level.
- Using moderate detergent can have better washing performance and protect the environment.
- Please don't use excess washing powder to prevent remnants on door gasket at end of wash cycle.

INTRODUCTION TO CONTROL PANEL



■ Pause Start

- Press button once to start and press again to pause.



■ Power

- This is for turning on / off the machine.
When the program finishes, machine switches off automatically.



■ Programme choice

- Choose a suitable programme according to clothes type and dirt level.

■ Display window

- When power is turned on, it will display the spin speed and other functions.
- When machine is in operation, it will display the time remaining.
- When machine breakdowns, it will display the error code.

■ Temp button

- Set the washing temperature according to the clothes type.
- The temperature setting range is different among programmes. Some of them have range limitations.

INTRODUCTION TO CONTROL PANEL

■ Speed button

- Set the spin speed according to user's requirement.
- Some programmes have limitations on setting the spin speed.

■ Delay button

- This option makes it possible for users to define the end of the washing time for up to 24 hours.

■ Time Wash button

- Users can choose between various washing time.
- Applicable to some programmes only (refer to Programme Chart section).

PROGRAMME CHART

Programme	Temperatures		Max Spin Speed (RPM)		Max Wash Load (kg)
	Setting	Range	WFRB802AHW	WFRB804AHW WFRB904AHW	
Mixed	30°C	☼ - 60°C	1200	1200	6
Cotton	30°C	☼ - 90°C	1200	1400	Rated Capacity
ECO	30°C	☼ - 40°C	1200	1200	Rated Capacity
Jeans	30°C	☼ - 40°C	1200	1200	5
Wool	☼	☼ - 40°C	800	800	2
Soak	30°C	☼ - 60°C	1200	1200	6
Down	30°C	☼ - 40°C	1000	1000	2
Quick wash	☼	☼ - 30°C	1200	1400	1
Colors	15°C	-	800	800	3
Delicates	☼	☼ - 40°C	600	600	3
Shirt	30°C	☼ - 60°C	1000	1000	3
Kids wear	30°C	☼ - 90°C	1000	1000	4
Rinse + spin	-	-	1200	1400	6
Spin	-	-	1200	1400	6
Drum clean	90°C	-	-	-	-

Hong Kong (water label and energy label)

Models applicable: WFRB802AHW, WFRB804AHW, WFRB904AHW

Cotton: This is the recommended programme at rated load capacity. Test wash cycles in compliance with regulations **IEC 60456**. This is the reference programme for the water label and energy label. Set this wash cycle with a temperature of 60°C. It is the most efficient programme in terms of water and energy consumption. The actual water temperature may differ from the declared one.

* This data indicated on the display or in the manual is an estimated time calculated for standard conditions. The actual programme may vary in relation to different factors, such as inlet water temperature and pressure, ambient temperature, quantity of detergent, size and type of load, load balancing and any additional optional functions selected.

PROGRAMME CHART

Programme Time *	Time wash	Delay Start	Description of Programme
0:56	✓	✓	For washing lightly to normally soiled garments in cotton, linen, synthetic fibres and mixed fibres.
1:01	✓	✓	For daily washing of cotton and linen fabrics.
1:34	-	✓	For washing lightly stained cotton and linen fabrics.
1:01	✓	✓	Suitable for washing denim clothes.
0:58	✓	✓	Wool garments can be washed using this programme. For best results, use special detergent and do not exceed maximum kg.
1:16	✓	✓	The process of soaking first and then cleaning, suitable for washing synthetic fiber.
1:23	✓	✓	For washing down clothing which is washable in machine.
0:15	✓	✓	For quick washing of small load or lightly soiled garments.
0:54	✓	✓	Preserve the color vibrancy of garments.
0:49	✓	✓	Suitable for washing silk and chiffon fabrics.
0:59	✓	✓	Suitable for washing shirts.
1:25	✓	✓	Suitable for washing children's clothing.
0:18	✓	✓	For clothes that only need to be rinsed and spinned.
0:09	✓	✓	Spins the load then empties the water.
2:14	-	✓	For drum cleaning only, using high temperature to sterilize the drum to effectively remove dirt and bacteria.

Singapore(water label)

Models applicable: WFRB802AHW, WFRB904AHW

The programme used for the evaluation under the mandatory Water Efficiency Labelling Scheme (WELS) and the recommended Washing Programme for soiled clothes is: ECO Default temperature 30°C.

FIRST-TIME AND DAILY USES

First-Time Use

Once the machine has been installed, and before you use it for the first time, run a wash cycle with detergent and no laundry, using the "DRUM CLEAN" cycle.

Daily Use

1. Preparation of laundry
 - Load the clothes in and close the door.
 - Put the detergent or washing powder into the relevant compartments.
 - Switch on the water tap, connect the drain-pipe, plug the power supply.
2. Switch on the machine.
3. Select the desired program.
4. Select the desired functions.
5. Press the "Pause Start" button.
6. When cycle ends, the buzzer will sound.

Daily Use of the WOOL Program

- Turn on machine and select the "WOOL" program.

Attention

- Please confirm the wash care label on the clothes before washing.
- When cycle ends, please take the clothes out immediately for airing in order to avoid fabric deformation.
- The temperature can't be more than 40°C to avoid spoiling the fabrics.
- We recommend using special detergents for better washing performance.
- Separately wash light colour clothes and dark colour clothes.

VARIOUS FUNCTIONS

Introduction to Delay wash

Method

- Turn on machine and choose the suitable programme according to user's requirement. Press the delay button to determine the finishing time. Press the "Pause Start" button to start-up the delay wash function. (Delay time has one hour interval and goes to a maximum of 24 hours.)

Attention

- If user need to amend the time, please turn off and turn on the machine again to reset.
- After selection, user can still cancel it by turning off the machine.
- Once delay wash has been confirmed, press the delay button. The set time will be displayed for 5 seconds.
- Delay wash duration differs based on water pressure, laundry load, clothes type, water temperature.

Cancel the buzzer

There is no buzzer when cycle ends if the buzzer function is canceled.

Set/Cancel method

Turn on machine and press "Pause Start" button till buzzer sounds. When button is released, the buzzer sound will be deactivated. To reactive, repeat steps.

CHILD PROTECTION FUNCTION

If machine door is opened before programme starts the machine will activate the child protection function automatically. The door will be locked and motor will be running for a while. Next, the door will be unlocked for a while till working again. If the door is opened during the waiting time, the machine will stop automatically.

CHILD LOCK FUNCTION

User can activate the child lock function in order to prevent children from playing with machine during operation. Both the door and programme buttons will be locked automatically. Door will be unlocked once function has been deactivated.

Set/Cancel method

Turn on machine and press "Temp" button for 3 seconds till the buzzer sounds. The child lock function is activated. Repeat steps to deactivate.

HINTS AND TIPS

RULES FOR SEPARATING LAUNDRY

- Fabric type/indications on label(cotton, mixed fibres,synthetic,wool,handwash items)
- Colour(separate coloured garments from whites,wash new coloured items separately)
- Size(wash items of different sizes in the same load to improve washing efficacy and weight distribution in the drum)
- Delicates(place small items-such as nylon stockings-and garments with clasps-such as braziers-in a laundry bag or in a pillow case with a zip).

WASH SYMBOLS ON GARMENT LABELS

The value given in the tub symbol is the maximum temperature possible for washing the garment.

- Normal mechanical action
- Reduced mechanical action
- Much reduced mechanical action
- Hand wash only
- Do not wash

CLEAN THE WATER FILTER REGULARLY

This is needed to prevent the filter from blocking and preventing the water from draining correctly.

SAVING ENERGY AND PROTECTING THE ENVIRONMENT

- Keeping within the load limits indicated in the "PROGRAMME CHART" will optimise energy,water and detergent consumption and reduce washing times.
- Do not exceed the detergent quantities recommended by the detergent manufacturer.
- Save energy by using a 60°C instead of a 90°C wash programme,or by using a 40°C instead of a 60°C wash programme.
- To save energy and time when washing, select highest spin speed available for the programme to reduce the residual water remaining in the garments at the end of the wash cycle.
- Pretreat any stains with an appropriate stain remover,or else dampen any dried-on stains with water prior to washing,as this will reduce the need to use a high temperature watch programme.

CLEANING AND MAINTENANCE

For any cleaning and maintenance, switch off and unplug the washing machine. Do not use flammable fluids to clean the washing machine.

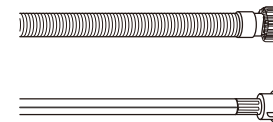
CLEANING THE OUTSIDE OF THE WASHING MACHINE

Use a soft damp cloth to clean the outer parts of the washing machine.

Do not use glass or general purpose cleaners, scouring powder or similar to clean the control panel – these substances might damage the printing.

CHECKING THE WATER SUPPLY HOSE

Check the inlet hose regularly for brittleness and cracks. If damaged, replace it by a new hose available through our After-Sales Service or your specialist dealer. Depending on the hose type:



If the inlet hose has a transparent coating, periodically check if the colour intensifies locally. If yes, the hose may have a leak and should be replaced.

INDICATORS

	Child Lock	This indicator will light up: Child lock function activated, all buttons (except for power button) locked.
	Delay end	This indicator will light up: Delay end function activated.
	Door lock	This indicator will light up: 1. Machine is running a programme. 2. High Temperature in drum. 3. High Water level.

CLEANING AND MAINTENANCE

- Proper cleaning and maintenance can prolong the lifespan of machine.
- Please unplug the power supply during maintenance.

MACHINE BODY

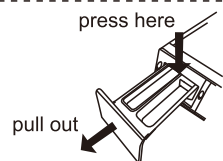
- Please use a soft cloth to clean the body after washing every time. If there is too much dirt, please apply some detergent or soap water on the cloth to clean the body.
- Please don't use water to flush the machine directly.
- Dirty powder, diluent, petrol and alcohol are forbidden for use to clean the machine.

DOOR GASKET

Please use cloth to clean the gasket after washing every time. If there are brooch or other sundries, please ensure to remove.

DETERGENT DISPENSER CLEANING

Please clean the detergent box periodically. Remove the box and clean it with water.



INLET VALVE CLEANING (RECOMMENDED ONCE EVERY SIX MONTHS)

1. Take out the inlet pipe
2. Take out the lint filter screen
3. Use a toothbrush to clean the lint filter screen and then assemble it again
4. Connect the inlet pipe after cleaning.



DRUM CLEANING (RECOMMENDED MONTHLY)

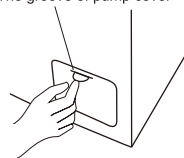
There may be dirt residue resting in the tub after prolonged usage.
(Attention: please don't put in clothes and detergent when using this programme.)

CLEANING PUMP FILTER (RECOMMENDED MONTHLY)

1. Insert coin into the groove of pump and press it. The filter cover can be opened.
- Attention: If there is hot water in the machine, please wait for water to cool down before opening the filter.
2. Remove the filter in an anticlockwise direction.
 3. Wash the filter with water.
 4. Assemble the filter into the pump in a clockwise direction.

Attention: 1. The filter should be assembled tightly in order to avoid water leakage.
2. Please don't clean the filter when the machine is working.

The groove of pump cover



NON-FAILURE CONDITION

Condition	Possible Reason
Door can't be opened	<ul style="list-style-type: none"> ● Water temperature is too high or power cut. ● Child lock activated. ● The clothes are clamped between door and gasket.
Peculiar smell	<ul style="list-style-type: none"> ● Due to rubber components, the rubber smell lingers at the beginning.
No water	<ul style="list-style-type: none"> ● Ensure that tap is turned on. ● Ensure filter is not blocked.
Water is being drained during wash cycle	<ul style="list-style-type: none"> ● Too much bubbly detergent.
Residual time change	<ul style="list-style-type: none"> ● Washing machine will automatically fill water to ensure clothes are evenly distributed. ● The time remaining is calculated based on 15L/min inflow. So according to different water pressure, time will be prolonged or shortened. ● Washing machine will prolong washing time if clothes are not evenly distributed.
Abnormal sound during spinning	<ul style="list-style-type: none"> ● Is power line connect to cabinet? ● Is the transport bolts have been removed? ● Is there a hairpin, coins or other foreign objects stuck in the drum?
Failure to work after power failure	<ul style="list-style-type: none"> ● If machine fails to operate after power failure, turn off and turn on the machine again to recover and reset program.
Emergency door opening	<ul style="list-style-type: none"> ● During power failure or appliance failure, the door remains locked. To remove the clothes, unplug the power cord and wait for the inner drum to stop before pulling down the emergency rope located on bottom right corner of cabinet. Observe a slight noise before you can open the door. Confirm that water level is below the bucket and water temperature is below 60°C in advance.

TROUBLESHOOTING GUIDE

Error Code	Reason	Inspection factors	solution
No display	Out of operation	<ul style="list-style-type: none"> ● whether the outlet have electricity ● whether the outlet is plugged in ● power cut or not ● leakage protector switch off or not 	
E11	No water	<ul style="list-style-type: none"> ● Whether tap is turned on or off ● Whether filter has any blockage ● Whether water has stopped flowing or not 	Press the "Pause Start" button
E12	Draining failure	<ul style="list-style-type: none"> ● Whether drain pipe is in the right place ● Whether drain height is too high or low ● Whether there is blockage in drain-pipe 	Press the "Pause Start" button
H	Door can't be opened	<ul style="list-style-type: none"> ● Make sure water temperature has cooled down. ● Suspension of washing 	Door unlocks automatically once temperature has dropped to safe range
U3	Spinning function doesn't work	<ul style="list-style-type: none"> ● Ensure washer is placed stably. ● Avoid overloading with too much clothes. ● Reduce load. ● Avoid rolling blanket up into machine. 	Add or remove 2 pieces of clothes and press the "Pause Start" button
U4	Door not closed		Close the door, wait for "door lock" light to be activated before pressing "Pause Start" button to continue
Other code	Alarm		Press "Pause Start" button to resume operation. If problem persists, contact the service center.

AFTER-SALES SERVICE

BEFORE CALLING THE AFTER-SALES SERVICE

1. See if you can solve the problem by yourself with the help of the suggestions given in the **TROUBLESHOOTING**
2. Switch the appliance off and back on again to see if the fault persists.

IF AFTER THE ABOVE CHECKS THE FAULT STILL OCCURS, GET IN TOUCH WITH THE NEAREST AFTER-SALES SERVICE

When contacting our Client After-sales service, always specify:

- a brief description of the fault;
- the type and exact model of the appliance;
- your full address;
- your telephone number.

If any repairs are required, please contact an authorised after-sales service (to guarantee that original spare parts will be used and repairs carried out correctly).

